

C O L L E C T I O N

for Brass Quartet and Electric Guitar
Composed for The Young Composers Collective
of Seattle
by Christian Asplund
October/November 1997
Seattle

Performance Notes:

1. There are nine miniatures in this collection: A, B, C, D, E, F, G, H, and Finale. They may be performed in any order, except that:
 - a. You should not begin with either of the guitar solos (E or G)
 - b. E and G should not be consecutive
 - c. You should end with Finale
2. Unless otherwise stated, when there is only one note or line in either the trumpet or trombone staff, the note or line may be played by either one or both trumpets or trombones at the players' or conductor's discretion.
3. Improvised guitar solos may be of any reasonable length, but they need not be long. The guitarist should especially keep the brass players' endurance in mind when deciding how long to make the solos in B, C, and H.
4. Bb trumpets are not written (not concert pitch).

Collection - A

Christian Asplund

♩ = c. 115-125

Trumpets

mf

Trombones

Tpt 1-2

subito p

Tbn

subito p

Tpt 3-4

f

ff

Tbn

Tpt 1-2

mf

ff

mf

Tbn

(Collection) A 2

21

Tpt

Tbn

4x

dim. poco a poco

4x

26

Tpt

Tbn

3x (Double Tongue)

mp cresc. poco a poco

3x (Double Tongue)

ff

30

Tpt

Tbn

subito mp

[Continue into
Improvised Solo]

Collection-B

Christian Asplund

$\text{♩} = c. 115-125$

B♭ Trumpets

mf

Trombones

Guitar

mp

Continue until m. 15

5

Tpt

gradual cresc.

ff

Tbn

8

Tpt

f

mf

ff

Tbn

Tpt

mf dim

Tbn

15

[Improvised Solo With Distortion]

Collection - C

Christian Asplund

(Not Too)

Slow. Warm, expressive. $\text{♩} = c. 80-90$

Trumpets

Trombones

6

Trp

Tbn

Trp

Tbn

Trp

Tbn

Guitar

Improvised Solo

Loop

Loop Under Guitar Solo
Move on when guitar finishes solo.

Loop Under Guitar Solo.
Move on when guitar finishes solo.

(Collection) C 2

22

Handwritten musical notation for measures 22-29. The top staff is in treble clef and the bottom staff is in bass clef. The music features various chords and melodic lines with accidentals and slurs. A semicolon is written above the first measure.

30

Handwritten musical notation for measures 30-34. The top staff is in treble clef and the bottom staff is in bass clef. Measure numbers 30, 31, 32, 33, and 34 are written above the staves. The notation includes complex rhythmic patterns and accidentals.

35

Handwritten musical notation for measures 35-40. The top staff is in treble clef and the bottom staff is in bass clef. Measure numbers 35, 36, 37, 38, 39, and 40 are written above the staves. A dynamic marking of #p is present in the first measure.

41

(stagger Breathing)

Handwritten musical notation for measures 41-46. The top staff is in treble clef and the bottom staff is in bass clef. Measure numbers 41, 42, 43, 44, 45, and 46 are written above the staves. A dynamic marking of pp is present in the fourth measure. The annotation "(stagger Breathing)" is written above the top staff with a slur over it.

47

Handwritten musical notation for measures 47-50. The top staff is in treble clef and the bottom staff is in bass clef. Measure numbers 47, 48, 49, and 50 are written above the staves.

Collection - D

Christian Asplund

Rhythmic but not heavy

Handwritten musical score for Collection - D, featuring five staves: Trumpets, Guitar, Tpts (3), Gtr, and Tpts (5). The score is written in 7/8 time and includes dynamic markings such as *mp*. The music consists of rhythmic patterns with eighth notes and rests. A section of the score is circled and labeled "Loop Until Trombone Melody Finished." The score concludes with a double bar line and repeat signs.

Note: This loop begins, after which trombone(s) enter with the melody on page D1a. After the trombone(s) finish(es), complete the cycle you are on and then move on. The trombone melody of D1a can start anywhere during the loop cycle but must use the same eighth note pulse as the loop on this page.

(collection) D 1a

Trombone(s): Enter at any time after trumpets and guitar begin.
You do not have to enter on the same down beat as the trumpets
and guitar, but you must use the same eighth-note pulse.

Trombone

f

5

11

Optional

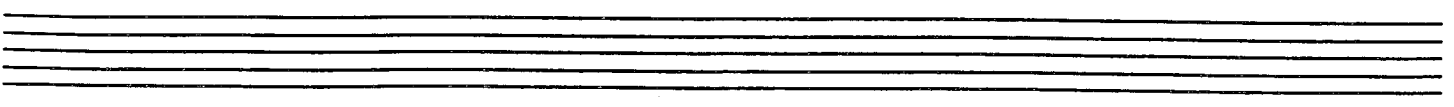
18

Improvised Solo, Then
Play mm 1-17 again

Handwritten musical score for measures 19-22. The system includes three staves: Tpt (Trumpet), Tbn (Tuba), and Gtr (Guitar). The music is in 4/4 time and features a complex rhythmic pattern with many beamed notes. A first ending bracket is present over measures 21 and 22. Dynamics markings 'f' and 'fz' are visible.

Handwritten musical score for measures 21-24. The system includes three staves: Tpt (Trumpet), Tbn (Tuba), and Gtr (Guitar). The music continues with the same complex rhythmic pattern. A first ending bracket is present over measures 23 and 24. The system concludes with a double bar line and repeat signs.

Handwritten musical score for measures 23-26. The system includes three staves: Tpt (Trumpet), Tbn (Tuba), and Gtr (Guitar). The music continues with the same complex rhythmic pattern. A first ending bracket is present over measures 25 and 26. The system concludes with a double bar line and repeat signs.



Slow Rock $\text{♩} = c. 55 - 68$

(Collection)

D 3

26

Legato

Tps

Tbrs

Gtr

Lots of Distortion

Continue until m. 39

29

Tps

Tbrs

32

Tps

Tbrs

34

Tps

Tbrs

37

Tpts

Tbns

38

Tpts

Tbns

(4x) *molto rit.*

(4x)

39

Tpts

Tbns

Gtr

ff

Whammy Bar

Slower

Whammy

Collection - E (Guitar Solo)

Christian Asplund

Lots of distortion, thickness, up to F#
and sustain. Very slow
Very free

Tune bottom string
E → F#

Guitar

Wah

Tr

pp — ff

pp — ff

Tr

Not fast

ff-raw

Accel.

Accel.

Accel.

Tr

Accel.

molto rit. e cresc.

(Peg gliss.)

(Tune bottom string back up to F#)

Fast Rock

8 *Gtr.* 4/4

9 10

11 *Gliss.* 8va

17 8va Wah

Even More Distortion (Hammer On)

(Tune bottom string down to E)

Tr. Tr. Tr. Tr.

18 2-Hand Hammer-On As Fast As Possible

19

20 rit. to

21 Slow Rock Accel. to

* ♯ = quarter sharp (halfway between ♭ and ♯)

Fast Rock

22

25

26

28

29

30

31

* ♯ = Quarter sharp (halfway between ♭ and #)

Collection - F

Christian Asplund

Peaceful

mp

pp very gradual cresc. to the end

rit.

rit.

(collection) - F2

==

Top Staff (Tpts): b^{\flat} , #^{\sharp}

Tbn: #^{\sharp} , #^{\sharp}

Gtr: b^{\flat} , #^{\sharp}

==

14

Top Staff (Tpts): #^{\sharp} , #^{\sharp}

Tbn: #^{\sharp} , b^{\flat}

Gtr: #^{\sharp} , #^{\sharp}

(Collection) F3

17

Loop

Loop

28x

3 $\geq 8x$

Loop

Loop

Loop

Loop

21

ff

Improvised Solo

Gradually Thrown Out the Brass

23

Brass

Collection - G (Guitar Solo)

Christian Asplund

A Not too fast ♩ = c. 75-80

2 (gliss.) Tr. Tr.

3

4

5 B

6

7 8 (2 different strings) Da Capo*

* Return to the beginning (A) and play through a gain to the end. Then play from the repeat sign at B to the end. In other words the form is: **A B A B B**

Collection - H

Christian Asplund

Fast. $\text{♩} = c. 160-190$

Trumpets

7

7

Guitar

Gliss.

Gliss.

7

7

Gtr

7

7

Gtr

Gliss.

Whammy Bar

10

Tpt

Tbn

Gtr

Triple-tongue a 2

Triple Tongue a 2

L with whammy

13

Tpt

Tbn

Gtr

16

Tpt

Tbn

Gtr

cresc.

19

ff dim

Loop Under Guitar Solo

Triple Tongue

ff dim.

Loop

4x

4x

Wait For Signal

20

P

ff

Majestic, Slow
♩ = c. 75-85

Collection-Finale

Christian Asplund

1st: ff
2d: p

1st: ff
2d: p

1st: ff
2d: p

:::

(Collection)-Finale - 2

25 27 4x

Trp

Tbr

Gtr

Take staggered breaths as needed.

Fade